



AcousticDesign™ Series AD-S.SAT

2.75-inch small format satellite
surface loudspeaker

Features

- Consistent tonal characteristics across the entire AcousticDesign Series for surface, ceiling, and pendant applications
- Refined depth and clarity even at low volume settings
- Mix-and-match capable, any subwoofer with any satellite in the AD Series SUB/SAT line
- Inverted aluminum dome dust cap
- Rated at 16 Ω
- Locking 2-pole Euroblock connectors
- Removable logo
- X-Mount™ Mini mounting hardware provides repeatable angles without drift or sag
- Intrinsic Correction™ voicings available via MP-M Series mixers and the Q-SYS Platform, including CXD-Q Series amplifiers
- Available in black (RAL 9011) or white (RAL 9010)
- Complete EASE, CF2, CAD, & BIM information available online



Background Music Applications · Retail · Restaurants · Coffee Shops · Fine Dining · Hospitality · Commercial Spaces

The QSC AD-S.SAT is part of the AcousticDesign™ Series SUB/SAT loudspeaker line which are ideally suited for background music applications that require refined depth and clarity even at lower volume settings.

The AcousticDesign Series offers integrators a premium quality installed sound solution where performance, consistent coverage, and aesthetics are paramount. Specifically designed to maintain a consistent tonal characteristic across the entire family in ceiling, surface, and pendant enclosures, the AcousticDesign Series allows integrators seamless transitions within blended installations.

The AcousticDesign Series SUB/SAT loudspeakers have been specifically designed to be mix-and-match capable. Any combination of satellites may be paired with any subwoofer in the SUB/SAT line.

The AD-S.SAT features a high quality 2.75-inch weather treated paper cone woofer with an inverted aluminum dust cap for extended high frequency presence within a sealed enclosure.

These loudspeakers are rated at 16 Ω , and up to four satellites may be connected to any AcousticDesign Series SUB/SAT subwoofer's high-pass filtered outputs. Satellites also may be used as stand-alone loudspeakers using an external high-pass filter.

The input is located on the rear of the loudspeaker and uses a locking 2-pole Euroblock style connectors capable of 12AWG (2 mm) wire thickness.

To retain their stylish aesthetics, the rugged ABS baffle is further protected by using UV inhibitors that prevent discoloration. The grille features a stick-on logo that can be removed blemish-free for installations where branding is not permitted.

Installers will appreciate X-Mount™ Mini hardware that ships with the satellites. This mounting solution allows for repeatable angles without drift or sag over time. The mount may be rotated on all four 90° axes for versatile wall or ceiling mounting options.

Intrinsic Correction™ voicings that optimize performance and speed the install process are easily deployed via the MP-M Series music and paging mixers as well as Q-SYS Platform, including CXD-Q Series amplifiers, as part of a complete QSC systems solution.

The AD-S.SAT is available in QSC standard black (RAL 9011) or white (RAL 9010).

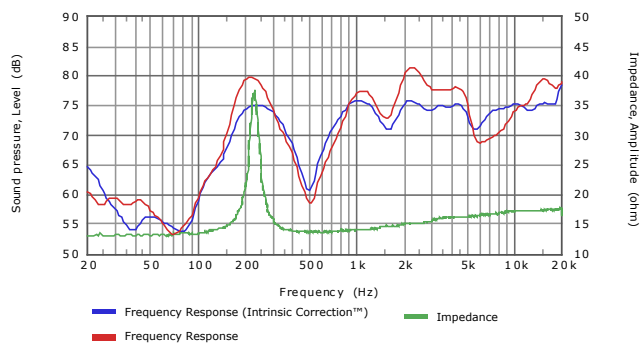
For your system integration needs, complete EASE, CF2, CAD, and BIM files will be available for download at QSC.com.

Certified for

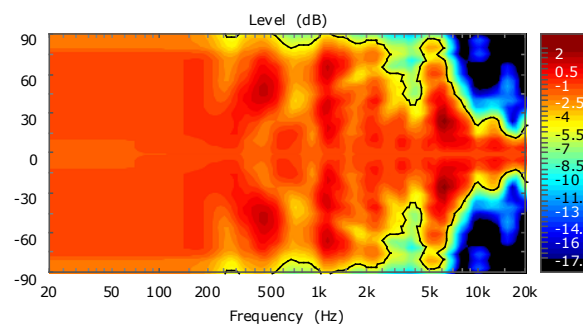
Microsoft Teams

AD-S.SAT Details

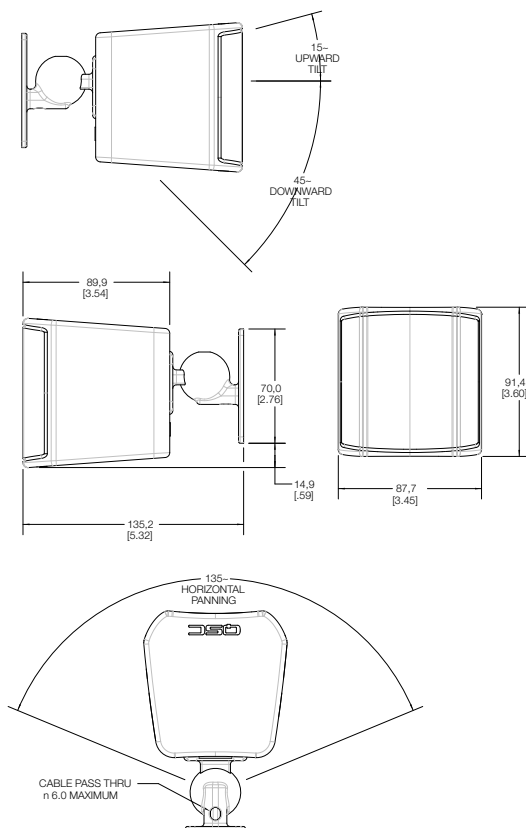
Frequency Response



Contour



Dimensions



Specifications

System Details	AD-S.SAT
LF transducer	N/A
HF transducer	2.75 in (70 mm) weather treated paper cone woofer
Effective frequency range ^{1,2,3}	150 Hz – 20 kHz
Rated noise power / voltage	25 W / 20 V (rms)
Sensitivity [dB] (rated @1 W, 1 m) ^{3,4}	82
Coverage (-6 dB) [°]	155° Conical
Directivity index [dB]	6.0
Directivity factor	4.0
Maximum SPL [dB] (rated, 1 m (continuous / peak)) ⁴	94 / 97 / 100
Recommended amplifier	25 W per satellite (with 1st order high-pass filter at 200 Hz)
Impedance	1652
Connector	2-pole Euroblock
Enclosure material	ABS
Grille material	Aluminum
Ingress protection	IP-34
Operating environment	Designed for indoor use
Operating temperature range	-4 to 122° F (-20 to 50° C)
Net weight	0.95 lb (433 g)
Product dimensions including wall bracket (H x W x D)	3.6 x 3.5 x 5.4 in (92.5 x 89 x 136 mm)
Shipping weight	TBD (pair packed)
Shipping dimensions (H x W x D)	TBD (pair packed)
Included accessories	X-Mount Mini , Euroblock connector (pair packed)
Safety agency	ROHS, CE compliant.

As part of QSC's ongoing commitment to product development, specifications are subject to change without notice.

Footnotes:

- 1) -10 dB from rated sensitivity
- 2) Anechoic chamber, half-space, 4 V, 1 m
- 3) Reference axis
- 4) From Thiele-Small parameters @ 4 V, 1 m
- 5) IEC, 2hrs, 16 ohm nominal, rated noise power [W], rated noise voltage [Vrms]
- 6) Calculated from rated noise power and sensitivity
- 7) Reference plane is the plane coincident with the loudspeaker baffle plane. Reference axis is the axis perpendicular to the reference plane and passing through the center of the baffle. Vertical plane is the plane intersecting the reference plane at a right angle, including the reference axis and the taps selector knob. Horizontal plane is the plane intersecting the reference plane and the vertical plane at a right angle, including the reference axis.
- 8) Mounted onto IEC baffle, 4 m
- 9) 500 Hz - 5 kHz

QSC®

1675 MacArthur Boulevard • Costa Mesa, CA 92626 • Ph: 800/854-4079 or 714/957-7100 • Fax: 714/754-6174
© 2020 QSC, LLC all rights reserved. QSC and the QSC logo are registered trademarks of QSC, LLC in the U.S. Patent and Trademark office and other countries. All other trademarks are the property of their respective owners. Patents may apply or be pending.

AD-S.SAT Spec Sheet 09/21/2020

