

The Soundweb London 100 Series represents a premium, open-architecture solution in the form of a highly flexible, cost-effective and scalable package.

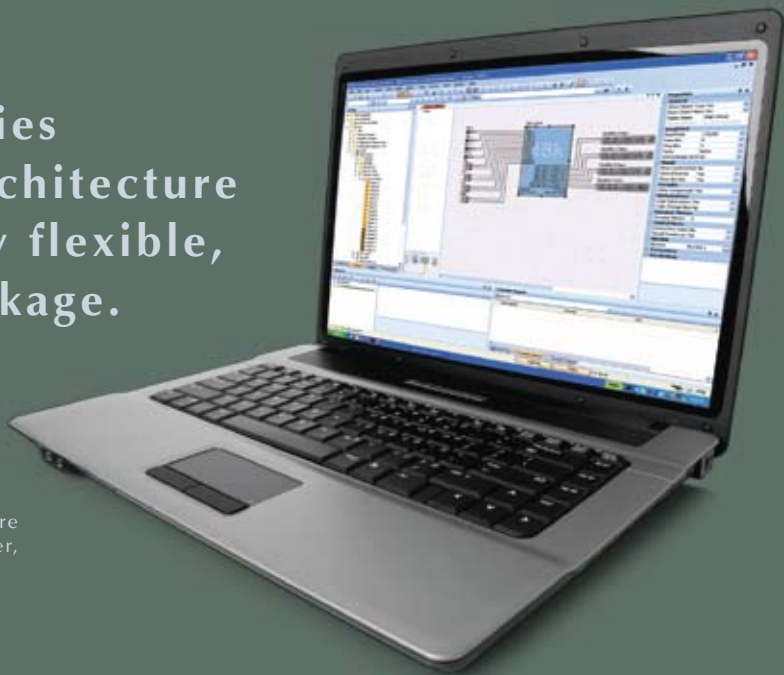


FIXED I/O CONFIGURATION
The Soundweb London 100 Series devices offer a fixed configuration of inputs and outputs (see comparison table for further information). The analog inputs of the devices provide software configurable gain in 6dB steps up to +48dB per channel and software selectable Phantom Power per channel. Phantom Power, Signal Present and Clip information per channel is easily accessible, without the requirement for a PC, from clear front panel LED indication.

OPEN-ARCHITECTURE PROCESSING
The Soundweb London 100 Series devices feature configurable signal processing and logic processing. The signal path between the inputs and outputs can be completely tailored to an application, and all of the processing objects and logic objects used in larger Soundweb London systems are made available to designers within the 100 Series. The configurable signal processing offered by the 100 Series devices is roughly twice that of the Soundweb London BLU-80 and BLU-16 devices.

CONFERENCING FUNCTIONALITY
The BLU-101 and BLU-102 devices feature the same Acoustic Echo Cancellation algorithm used on the Soundweb London Acoustic Echo Cancellation Input Cards. The BLU-101 offers 12 AEC algorithms while the BLU-102 offers eight AEC algorithms and a telephone hybrid. The AEC algorithms run on dedicated processors but are represented within software as a Processing Objects. This means that all of the configurable DSP is available for other processing but AEC inputs can be sourced locally, from networked audio or even post-mix for budget-constrained applications.

DIGITAL AUDIO BUS
The 100 Series devices feature a low latency, fault tolerant digital audio bus of 48 channels which uses standard Category 5e cabling giving a distance of



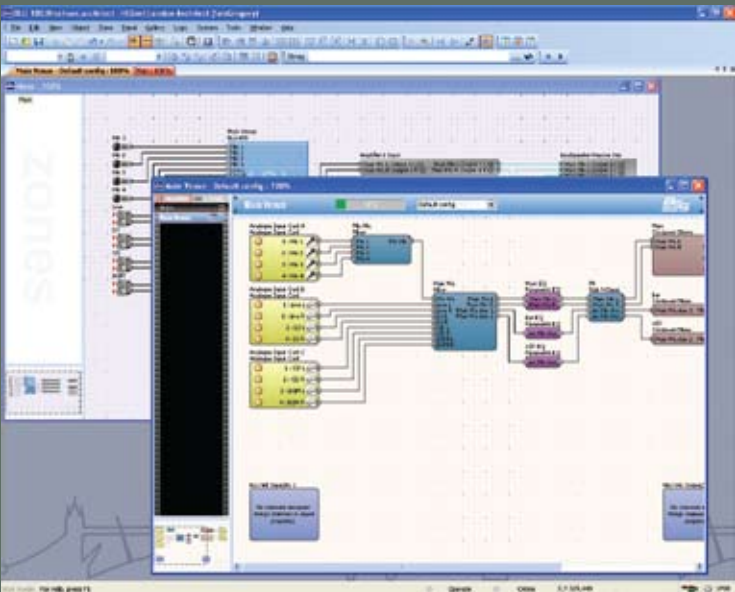
100m between compatible devices. Fiber media converters can be used to increase the distance between devices to over 10km (6.2 miles) using single mode fiber. This 48 channel digital audio bus represents channels 1-48 of the larger 256 channel digital audio bus when integrated with the BLU-800, BLU-320, BLU-160, BLU-120 and BLU-BOB devices. Up to 60 digital audio bus compatible devices can share channels on a single bus.

CONFIGURATION, CONTROL AND MONITORING
The 100 Series devices are configured, controlled and monitored from HiQnet™ London Architect v3.02 or later. This facilitates the straightforward design process of systems including any mix of the Soundweb London family members. Whether the system includes a single 100 Series device, 100 Series devices with BLU-BIB and BLU-BOB I/O expanders, multiple 100 Series devices or is a larger hybrid system, the design is encapsulated within a single software application.

EXTERNAL CONTROL
As with other Soundweb London devices, 12 Control Inputs and six Logic Outputs allow the 100 Series devices to be integrated with GPIO compatible devices. An RS-232 port allows integration with third-party control systems or simple serial control of third-party devices such as projectors, displays and lighting controllers. In addition to providing the connection for configuration, control and monitoring, the Ethernet port allows integration with third-party control systems using IP control.

EVOLUTION
The Soundweb London 100 Series is an example of where user feedback, combined with the leveraging of Soundweb London's technology, functionality and flexibility has resulted in the development of a truly game-changing product. The 100 Series broadens the reach of Soundweb London and makes a solution strongly associated with high-profile projects available to many more applications.

The 100 Series devices and the other members of the Soundweb London family provide the building blocks of the perfectly tailored system solution.

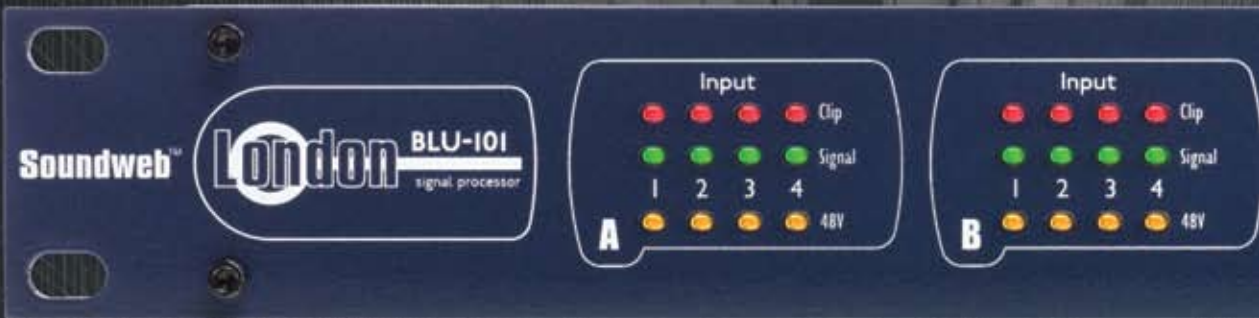


BSS Audio
8760 South Sandy Parkway
Sandy, Utah 84070
801.566.8800
bssaudio.com

Part number: 18-0690



**NETWORKED
PROGRAMMABLE
DSP SYSTEMS**



**Soundweb™
London**
100 SERIES

Whether a solo or a full ensemble, Soundweb London delivers the perfect performance.

Soundweb™
London

PRODUCT BADGE
Family member indication

INPUT INDICATION
Analog input indication per card position

INPUT POSITION LABEL

CLIP LED
Analog clip indication per channel for inputs and outputs (+18.5dB)

SIGNAL LED
Signal present indication per channel for inputs and outputs (-20dB)

48V LED
Phantom Power indication per channel for inputs

OUTPUT INDICATION
Analog output indication per card position

OUTPUT POSITION LABEL

COM LED
Control link status and activity indication for Ethernet and RS-232 connections

STAT LED
Device configuration status indication

ERR LED
Error indication

PWR LED
Power indication (flashes during Locate function)

FRONT

REAR

FUSE
Field-serviceable fuse

POWER CONNECTOR
IEC power connector
100-240V AC, 50/60Hz

LOCATE BUTTON
(temporarily flashing button)
Bi-directional Locate for identification of hardware devices from software devices or software devices from hardware devices

RS-232 PORT
Serial port for integration with third-party control systems or for simple serial control of third party devices such as projectors, displays and lighting controllers

DIGITAL AUDIO BUS
IN and OUT connectors for 48-channel, low-latency, fault-tolerant digital audio bus (channels 49-256 passed through).

ETHERNET CONNECTOR
Ethernet connector for Soundweb London configuration, control and monitoring. Also used for integration with third-party control systems using IP control

OPTO
Opto-isolator which conducts when device is powered and functioning correctly

LOGIC OUTPUTS
Allow Soundweb London to control up to six LEDs or relays

CONTROL INPUTS
Allow up to 12 contact closures, faders or rotary potentiometers to be used to control Soundweb London parameters

AUDIO CONNECTOR OUTPUTS
Balanced connections for outputs

AUDIO CONNECTOR INPUTS
Balanced connections for mic / line level inputs

I/O POSITION LABEL



BLU-102
TELEPHONE HYBRID INPUT

The power, flexibility and reliability for any scale of installed sound system.

With a choice of three different devices within the Soundweb London 100 Series – which are fully compatible with the other members of the Soundweb London family – the Soundweb London 100 Series makes Soundweb London open-architecture and flexible conferencing solutions more accessible than ever. Whether you require standalone cost-effective open-architecture solutions, conferencing functionality or augmentation of larger systems, the Soundweb London 100 Series offers the building blocks of a tailor-made system.

	CHASSIS	INPUTS	AEC ALGORITHMS	TELEPHONE HYBRID	OUTPUTS	CONFIG.	LOGIC	RS-232	GPIO	SIGNAL PROCESSING	DIGITAL AUDIO BUS
BLU-100	19"	12			8	S	✓	✓	✓	✓	48
BLU-101	19"	12	12		8	S	✓	✓	✓	✓	48
BLU-102	19"	10	8	✓	8	S	✓	✓	✓	✓	48
BLU-BIB	HALF-RACK	8				M					256
BLU-BOB1	HALF-RACK				8	M					256
BLU-BOB2	19"				8	M					256

C= Configurable; S= Software; M= Manual

Wall Controllers



BLU-10
(available in white, black and blue)
[E]



BLU-8
(available in white and black)
[E]



BLU-6
[C]



BLU-3
[C]



sw9015US
[C]



sw9012US
[C]

Input / Output Expanders

Rack Mount Kit available to accommodate up to two BLU-BIB or BLU-BOB1 devices (1U).



BLU-BIB



BLU-BOB1

Also available in 19" chassis (BLU-BOB2)

Accessories

BLU-HIF
Telephone Headset Interface



BLU-MC1
Fiber Optic Media Converter



[E] = Ethernet Controller [C] = Control Input Controller



BLU-102 rear panel